

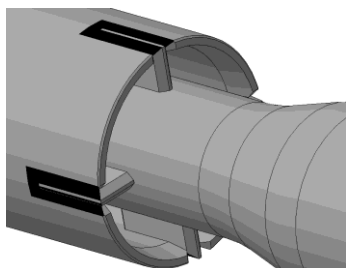
## Junk basket

### Designation

Junk basket is designed for catching and retrieving large cutting particles, metal and carbide scrap from bottomhole zone

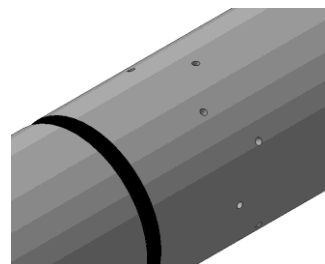
### Design features

Basket is equipped with centering inserts which ensure axiality of basket and body



### Design features

Basket has ports for liquid outflow



## Technical characteristics

Type	OD, mm	Flushing port OD, mm	Basket depth, mm	Height, mm	Weight, kg	Tool joint GOST 28487-2018, box/pin
SHMU	127	38	500	1000	50	Z-88/Z-88
	180	58	500	1000	130	Z-117/Z-117
	245	80	500	1000	290	Z-152/Z-152

## Identification example

**SHMU-127.M-88-88**

**SHMU** - Junk basket

**127** - Nominal diameter

**M-88-88** - Tool joint

Operating parameters are typical for the bit type specified in general applications. For recommendations on your specific application, please contact a "BURINTEKH", Ltd representative.

[www.burintekh.com](http://www.burintekh.com)

6 Yubileinaya st, Ufa, republic of Bashkortostan, Russia, 450029